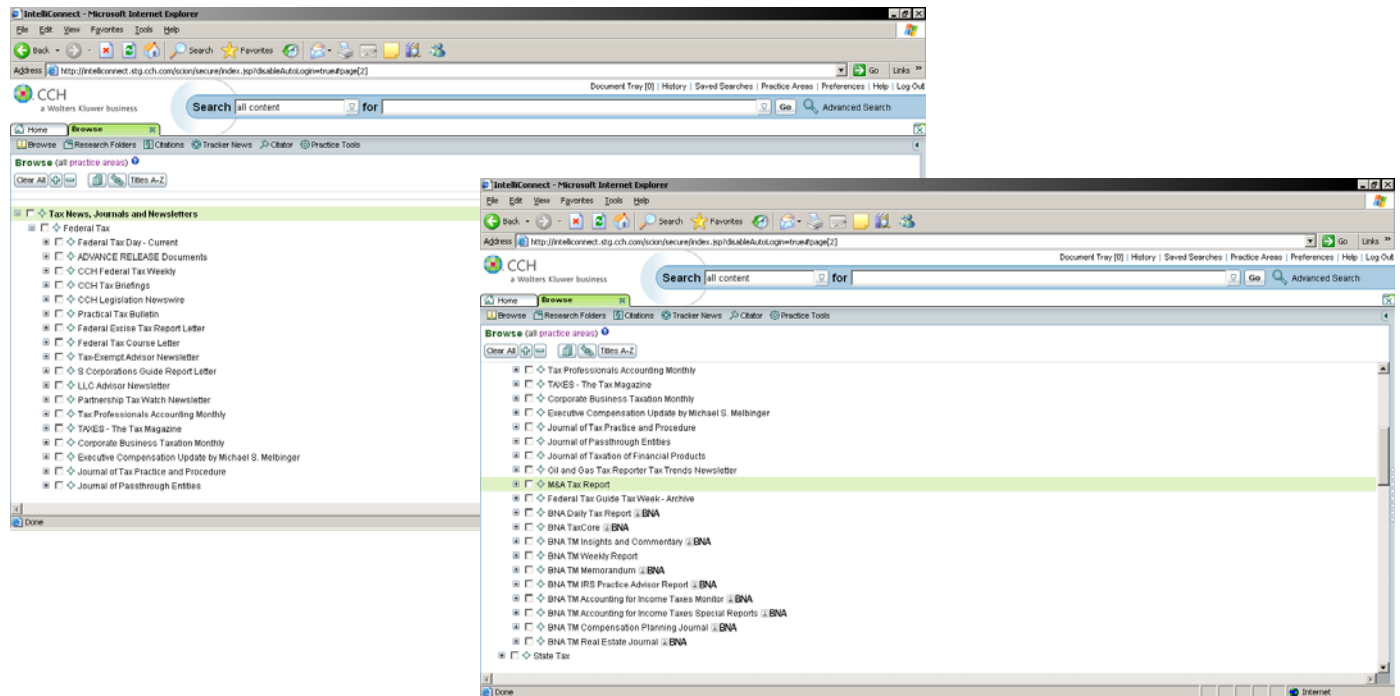


Using BNA Publications on IntelliConnect®

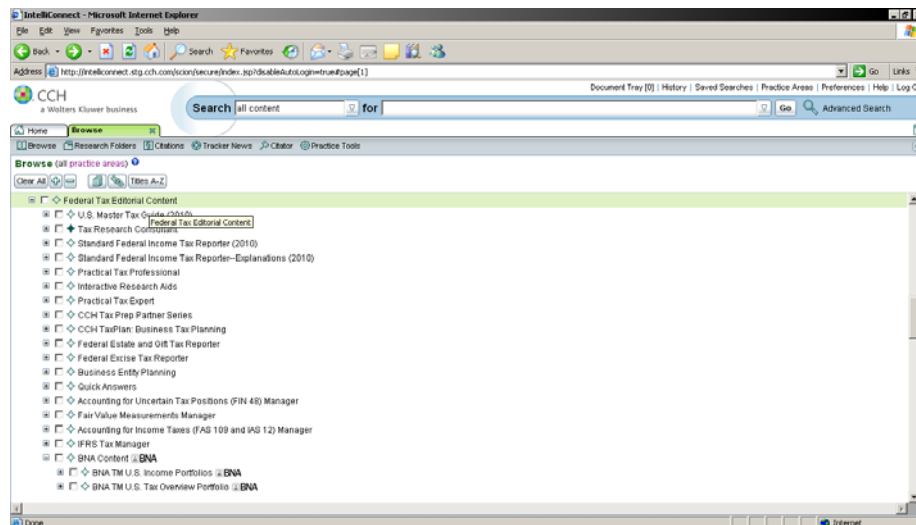
Select Practice Area (top of screen) Tax and Accounting. You may also drill down to the specific tax areas to narrow your BNA search (i.e., Federal Tax, International Tax).

Use the Browse/Menu Walk to select specific BNA titles you are interested in — BNA content is generally located under “Tax News Journals and Newsletters” and under “Federal Tax Editorial Content.”

“Tax News Journals and Newsletters”

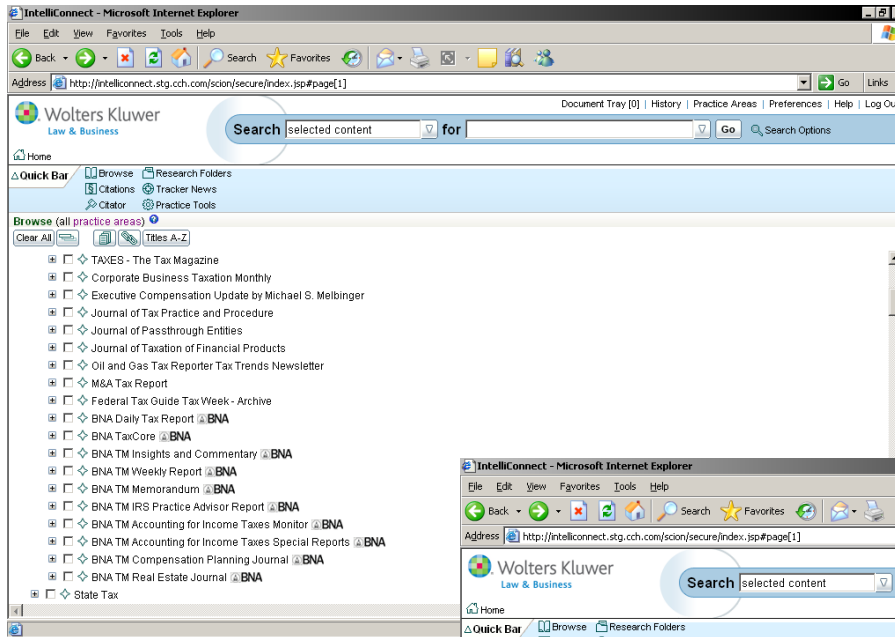


“Federal Tax Editorial Content”



BNA publications are clearly identified by the BNA logo that appears after each publication.

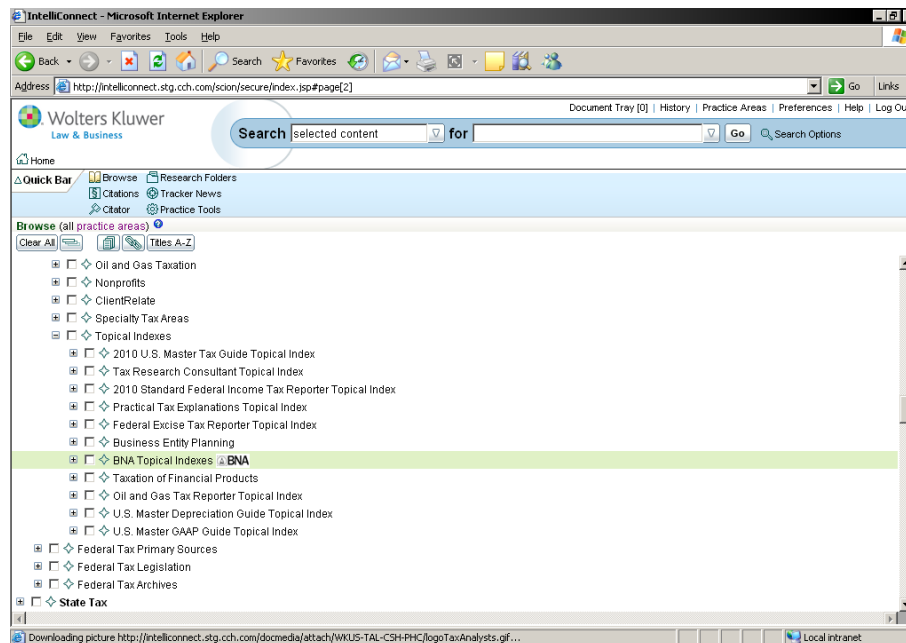
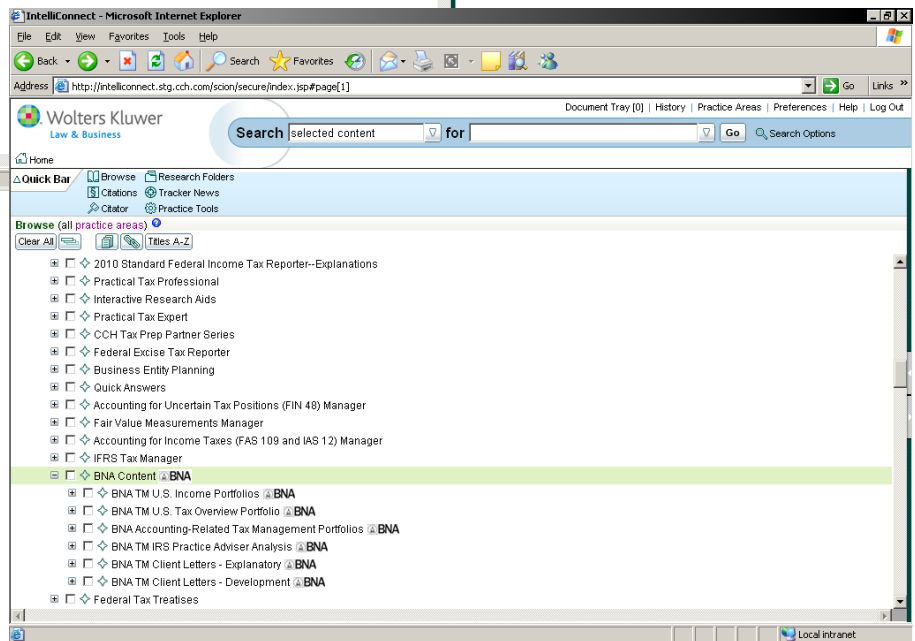
Continued on Next Page



If you want to search BNA content or a combination of BNA and CCH content, it's up to you. Simply check the boxes next to the content you wish to search. You can drill down to narrow your selection, if you like.

Using Browse/Menu Walk is the easiest way to find your BNA News on IntelliConnect. When you check BNA Daily Tax Report on the Browse Tree, you can then search for news items by topic.

TIP: Targeting BNA content and CCH content together on the Browse Tree and then performing a search will give you the best of both research products.



BNA Indices are located under Topical Indexes. Simply menu walk to your choice of indices and work from there.